

SOUTHWEST FLORIDA ASHRAE OCTOBER NEWSLETTER

A MESSAGE FROM YOUR SWFL ASHRAE PRESIDENT:

CASEY A. HAZEN

Greetings SWFL Chapter,

What a ride! October has really been one for the books, what with back-to-back hurricanes devastating our coast and the rising tensions of an upcoming presidential election...That we can weather storms such as this shows me just how strong and resilient this community really is. I sincerely appreciate your patience with us as we took a hiatus from our usual monthly meetings to give everyone time to recover, rebuild, and focus on the people that matter most in the wake of all these recent events.

Next month we will resume our normal schedule, starting with our November lunch meeting on Wednesday, November 13th. We will have Burke Gruber coming to speak to us about the fundamentals of Variable Frequency Drives and the many advancements they've realized in recent years.

Lastly, I'd like to thank all of our sponsors who have continued to keep us up and running in the midst of this tumultuous time. To both our new & historically steadfast donors, this chapter would not be what it is today without your generous support & contributions. I hope you enjoy this newsletter as we have compiled several helpful and relevant industry articles for you to read herein.

Please keep an eye out for future newsletters & meeting announcements. We have a lot in store for you this year, and this is only the beginning.

Cheers,

Casey Allen Hazen, BSME
SWFL Chapter President 2024-2025



Refrigeration and Beer

Refrigeration Chair - Kevin Jewell

“Fob” is the brewers’ name for the foamy carbon dioxide that comes off the top of the fermentation vessels. The fob tank is like a large balloon that inflates as carbon dioxide is stored for batch processing. First the gas is washed and dried, then compressed to about 300 psi (2068 kPa). The compressed gas passes through a refrigerated condenser and non-condensable gas purger before collection in a high-pressure receiver and transfer to bottles or tankers. Some more sophisticated systems can use the CO₂ itself as the refrigerant, enabling a more efficient operation, but most systems use a simple ammonia or HFC plant for the CO₂ condenser. The relationship between beer and refrigeration, however, goes further back than CO₂ recovery. Cooling fluids are used in a wide variety of ways to slow down the brewing process. Originally, this was usually calcium chloride brine, an excellent secondary coolant, but difficult to live with due to high corrosion rates if not properly treated. The restrictions on use of chromates as corrosion inhibitors (remember Erin Brockovich?) put an end to the use of calcium brine, even though other inhibitors are available.

MONTHLY MEETINGS

- November 13th: Lunch
- December: Refrigeration Tour, Date TBD
- January 8th: Dinner
- February 12th: Lunch
- March 12th: Dinner
- April 9th: Dinner
- May 14th: Dinner

*Authors: Andy Pearson, Ph.D., C.Eng.
Citation: ASHRAE Journal, vol. 59, no. 6, June 2017
Pages: 2
Publish Date: June 2017
Publisher: ASHRAE*

2024-2025 Sponsorships Oppourtunities

Research Promotion Chair - Gary DeVore

Diamond Sponsorship:

Trane Technologies

Gold Sponsorship:

Tom Barrow Company (TBCo), Commercial Air Management (CAM), B&I Contractors, Manhattan Construction, Gilbane Building Company, Thermal Concepts

Silver Sponsorship:

Diversified Fluid Controls, Integrated Cooling Solutions

Bronze Sponsorship:

Victaulic, Johnson Controls International (JCI), George A. Israel Jr. Inc.

I would like to thank those of you who have already committed to sponsorships for the 24-25 society year.

We would encourage anyone who values their membership in SWFL ASHRAE to review the many benefits of sponsorship detailed in the annual sponsorship letter attached at the end of this newsletter.

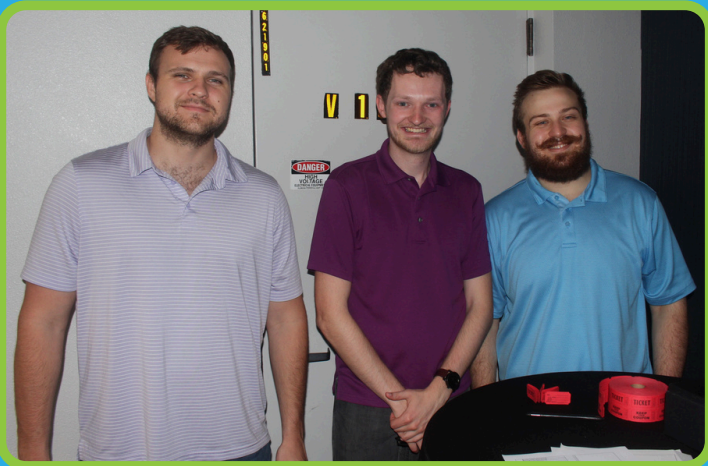
If you'd like to either join our 24-25 sponsors or have already agreed to be a 24-25 sponsor and do not see your name listed above, please reach out.

gdevore@bandiflorida.com / (239) 671-6448

Thank you, we appreciate your continued support.

September Monthly Meeting 2024

Historian Chair- Sidney Feldman



GSA and DOE Release RFI for Technologies that Increase Sustainability of Buildings

Government Affairs Chair - Trevor Cltek

The U.S. General Services Administration (GSA) and U.S. Department of Energy (DOE) announced a Request for Information on innovative, emerging, and sustainable technologies that enable energy efficiency and decarbonization in commercial buildings, and more efficient electric infrastructure. As part of the Inflation Reduction Act (IRA), GSA is investing \$30 million to improve the sustainability of federal buildings, which this RFI would help advance.

The RFI is specifically looking for novel technologies in the following categories:

- Deep Energy Retrofits
- All-Electric Buildings and All-Electric Vehicle Fleets
- Healthy and Resilient Buildings
- Low-Embodied Carbon Building Materials
- Net-Zero Operations
- Packages of Emerging and Sustainable Technology Solutions

Submissions for the RFI must be technically and commercially ready for evaluation in occupied, operational buildings. Selections will serve as a pilot through a GSA, DOE, or combined program in one of the above categories. The RFI opened for submissions on August 1, 2024, and will remain open until September 13, 2024. If you are interested in submitting to the RFI, please click [here](#) for more information

Reopening of public comment period and public hearing for HFC Phasedown

Government Affairs Chair - Trevor Cltek

The U.S. Environmental Protection Agency (EPA) has reopened the public comment period for [new rules](#) regarding restrictions on the use of hydrofluorocarbons (HFCs) under the American Innovation and Manufacturing (AIM) Act in variable refrigerant flow air conditioning subsector. [Originally proposed June 26, 2024](#), the new rules amends the Technology Transitions regulation by adding an additional year for the installation of new Variable Refrigerant Flow (VRF) systems using HFCs with a global warming potential of 700 or more, and where components were manufactured in the U.S. or imported into the U.S. prior to January 1, 2026. The proposed rule would extend the deadline until January 1, 2027.

Comments must be received by August 27, 2024. Additionally, the EPA will host a virtual public hearing for the public to offer oral comments on the proposed rule. The virtual public hearing is scheduled for August 27, 2024, at 1 p.m. ET. Click [here](#) if you would like to register for the hearing.

EPA Funds \$34M to Improve Indoor Air Quality at Schools

By Joe Bebon, Editor Aug 28, 2024

YEA Chair - Justin Fales

Approximately one-sixth of the U.S. population attends or works in roughly 130,000 schools around the country, and half of all K-12 students attend schools that do not have indoor air quality (IAQ) management plans or programs in place. According to the EPA, air quality in schools is of particular concern because children's developing organ systems are often more sensitive to environmental stressors, and children are frequently more heavily exposed to toxic substances in the environment than are adults. Children breathe more air in proportion to their body weight than adults. The EPA has selected five groups to receive \$34 million in grants for projects helping address indoor air pollution in K-12 schools in low-income, disadvantaged, and Tribal communities across the country. This announcement comes after the agency revealed \$26 million in funding to protect children from lead in drinking water at schools and childcare facilities.

Source: <https://facilitiesmanagementadvisor.blr.com/heating-and-cooling/epa-funds-34m-to-improve-indoor-air-quality-at-schools/>

2024-2025 Diamond Sponsor



2024-2025 Gold Sponsors



2024-2025 Silver Sponsors



2024-2025 Bronze Sponsors



THANK YOU FOR YOUR SUPPORT!



From: ASHRAE Southwest Florida Chapter

Subject: ASHRAE Southwest Florida Sponsorship Opportunities for 2024-2025

The ASHRAE Southwest Florida Chapter RP fund-raising events are excellent sponsorship opportunities. Your company reaches many key decision makers and sends a strong message of supporting the research that the community relies upon for comfort and sustainability.

The Southwest Florida Chapter is continuing to make sponsorships even easier by offering levels that include the promotion of your company at all chapter events! If you are unable to contribute at one of these levels, sponsorship opportunities for the Golf and Fishing tournaments will be offered separately before each event!

Go To: <https://www.swflashrae.org/sponsorship> for an on-line payment option!

Annual Sponsorship Levels

Gold Level - \$3,500 (Savings: \$885)

- Golf Tournament: Gold Sponsorship Package (Value: \$2,385)
 - (8) Player Entries, (1) Tee Sponsorship, (1) Flag Sponsorship, (8) Mulligans, (1) Arm Length Raffle, (8) Putting Contest Entries
- Fishing Tournament: Gold Sponsorship Package (Value: \$850)
 - (4) Entries, Company Logo on Shirt, and special recognition
- Tech Topic Presentation (Value: \$250)
- (4) YEA Cornhole Tournament Entries (Value: \$100)
- (10) Monthly Meeting Tickets (Value: \$350)
- (1) Meeting Sponsorships (Value: \$250)
- Signage at each monthly meeting (Value: \$100)
- Logo on Monthly Newsletter (Value: \$100)

Silver Level - \$1,500 (Savings: \$615)

- Golf Tournament: Silver Sponsorship Package (Value: \$1,265)
 - (4) Player Entries, (1) Tee Sponsorship, (4) Mulligans, (1) Arm Length Raffle, (4) Putting Contest Entries
- Fishing Tournament: Silver Sponsorship Package (Value: \$425)
 - (2) Entries, Company Logo on Shirt
- (2) YEA Cornhole Tournament Entries (Value: \$50)
- (5) Monthly Meeting Tickets (Value: \$175)
- Signage at each monthly meeting (Value: \$100)
- Logo on Monthly Newsletter (Value: \$100)

Bronze Level - \$1,000 (Savings: \$350*)

- Golf Tournament: Tee Sponsorship (Value: \$500)
- Fishing Tournament: Bronze Sponsorship Package (Value: \$625*)
 - (1) Entry, Company Logo on Shirt
- (1) YEA Cornhole Tournament Entry (Value: \$25)
- (2) Entries in either Golf or Fishing Tournaments (Value: \$250)
- Signage at each monthly meeting (Value: \$100)
- Logo on Monthly Newsletter (Value: \$100)

Portion of Proceeds to Benefit ASHRAE Research and the SWFL ASHRAE Chapter Endowment Fund
SWFL ASHRAE is a 501©(3) not for profit organization





ASHRAE Membership

ashrae.org/benefits

Five Benefit Options Available.



Full Members and Associates can now select **1** of the following options:

<p>eLearning Course</p>  <p>150+ to choose from</p>	<p>ASHRAE Standard or Guideline</p>  <p>100+ to choose from</p>	<p>ASHRAE Handbook</p>  <p>PDF version of the most recent</p>	<p>Handbook Online</p>  <p>4 most recent</p>	<p>ASHRAE Certification Exam Study Guide</p>  <p>3 to choose from</p>
---	---	--	--	---

First Year New Members automatically get:

<p>1 Free Registration</p>  <p>to Winter or Annual Conference</p>	<p>12 Months FREE</p>  <p>Handbook Online</p>
--	--

Additional Member Benefits

<p>12 month subscription to ASHRAE Journal</p> 	<p>25% discount On 400 publications in the Bookstore</p> 
<p>2000+ free resources for members in the ASHRAE Technology Portal</p>	

50,000+
Members



190+ Chapters **16** Regions across the world

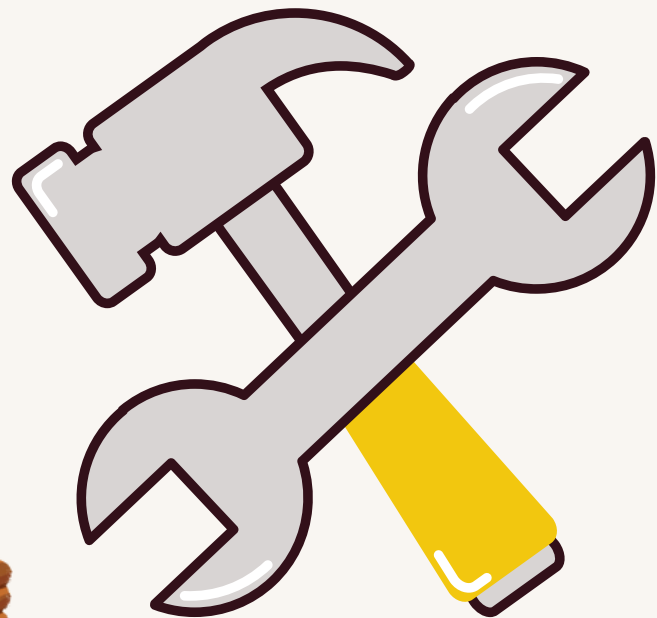


STEM@Work

SCIENCE . TECHNOLOGY . ENGINEERING . MATH
<http://www.leeschoolfoundation.org>

Scheduled Technical Tours at B&I Office:

- Wednesday, November 13th
(10am-12pm) - School TBD
- Wednesday, December 4th
(10am-12pm) - School TBD
- Wednesday, January 22nd
(10am-12pm) - School TBD
- Wednesday, February 12th
(10am-12pm) - School TBD
- Potential for One Additional Stem@Work





Message from the Foundation

Since 1986 the mission of the Foundation has been to enhance the quality of public education in Lee County by increasing community involvement in, and support for, Lee County Public Schools. A diverse group of local business and community leaders realized that the cornerstone of an economically strong community was a quality public education system.

The purpose of every initiative of The Foundation for Lee County Public Schools is to enhance and enrich the quality of public education in Lee County for students and educators. View our various programs to learn more about our students' unique learning opportunities and how teachers themselves are recognized and encouraged in their dedicated efforts.

Stem@Work

Our focus on STEM began with the notion that students need more opportunities in the areas of Science, Technology, Engineering, and Math related fields. The National Science Foundation estimates that 80% of the jobs created in the next decade will require some form of math and science skills.

Our STEM Initiatives are a collaboration between the Foundation and the School District of Lee County. Funded through the generosity of our business partners, this initiative offers students the opportunity to participate in field trips and internships, as well as experience hands-on activities through partnerships with businesses in the community. Check out more information at: <https://leeschoolfoundation.org/>



Student Advocacy & Mentoring Partnership (STAMP)

Realizing the great impact that mentors have on students, the Foundation has implemented the Student Advocacy & Mentoring Partnership (STAMP). STAMP is a program that offers students the opportunity to achieve success by providing them college and career planning resources and volunteer mentors to give students assistance, guidance, motivation and accountability to work hard and to ensure they graduate from high school to continue their education either through technical training or earning a college degree. It is a multi-year commitment for at-risk high school students to invest in their future and increase the high school graduation rate and post-secondary educational opportunities.

The STAMP program strives to accommodate eligible students, match them with mentors, and assist them in acquiring scholarships to cover the cost of attending college or other post-secondary training. Students and their families, mentors, school coordinators, and Foundation staff all work together through the STAMP program and are instrumental in helping students pursue their post-high school education and career goals. Students will also be able to attend STEM@work events to learn about local businesses.



Apply to STAMP

